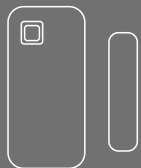
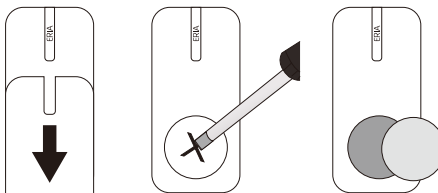


ADUROS  
SMART  
**ERIA**<sup>®</sup>

USER MANUAL  
WIRELESS CONTACT SENSOR

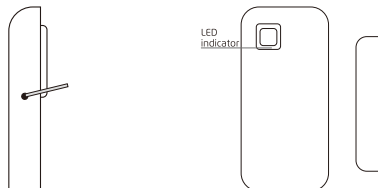


1. Place the batteries in the battery compartment.

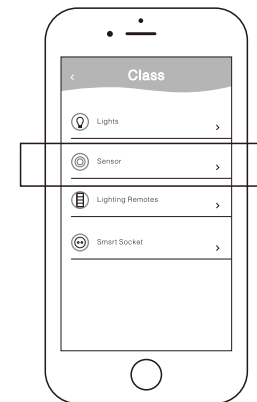


2. Use the included pin to press the button that is located behind the safety hole.

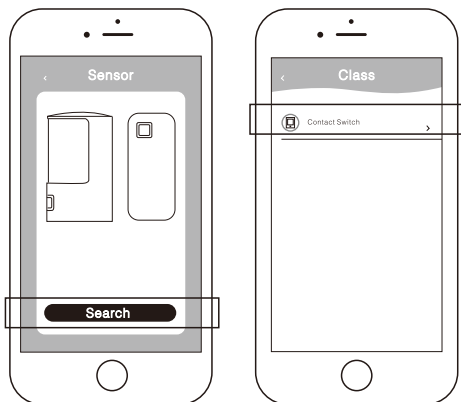
3. The light will flash continuously for 60 seconds. (Device is in pairing mode)



4. Open your control station App and press on settings → devices → sensors → ADD device.



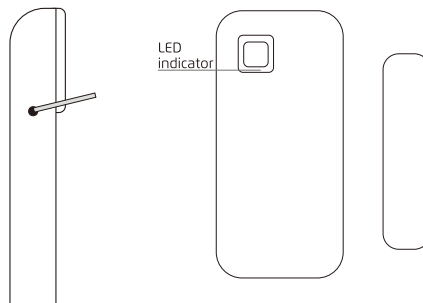
5. Once the Device is successfully added, The LED will stop flashing and the device can be seen in your APP.



**Trouble Shooting:**

6. To reset the device.

\*\*\*To reset the sensor press the button behind the safety hole at the side of the sensor for approximately 3 sec with the included pin. The LED will flash fast to confirm the reset.



**LED FUNCTION TABLE**

Connection mode	LED will flash once per second for approximately 1 min.
Connection successfully	LED will stop flash.
Sensor reset	LED will flash fast.
Sensor triggered (when the sensor is opened for more than 10mm)	LED will flash once.



[www.eria-smart.com/manuals/contactsensor](http://www.eria-smart.com/manuals/contactsensor)